

Waste Management
1001 Fannin Street
Houston, TX 77002



TOWNSHIP OF NOTTINGHAM
909 SUGAR RUN RD
EIGHTY FOUR PA 15330



Dear Valued Customer
Important notice - Waste Management's Inbound Recycling Quality Policy

The recycling industry including Waste Management is experiencing high levels of contamination which is trash in the recycling. This is coming at a time when the requirements for quality (clean recycling) are increasing due to new policies in China. These policies have banned twenty-four types of materials and include strict quality standards.

In 2017, China began to limit the quantity of material it accepts for recycling and in 2018 added specific contamination limits set at 0.5%. These significant changes are affecting the recycling industry world-wide. **As a result, our focus on quality is higher than ever, as we work to ensure the long-term sustainability of our recycling programs.**

When non-recyclable items (contamination) end up in your recycling loads, they have the potential to turn the entire load into trash and increase processing costs resulting in contamination and/or additional service charges.

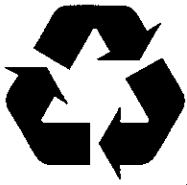
IMPORTANT: Moving forward you will be assessed contamination charges and processing fees of \$150 per ton for excess contamination found in your loads.*

Please join us in the battle against contamination and make sure when your recycling loads are delivered to one of Waste Management's transfer stations or a Material Recovery Facility (MRF) they are free of contaminants and follow the recycling do's and don'ts.

Recycling Do's	Recycling Don'ts
<i>Do</i> recycle all empty bottles, cans, paper and cardboard.	<i>Don't</i> bag your recyclables. Plastic bags and film get tangled in the machinery.
<i>Do</i> keep foods and liquids out of recycling.	<i>Don't</i> include food-soiled items - they can turn an entire load of recycling into trash.
<i>Do</i> keep plastic bags out of recycling.	<i>Don't</i> add sharp or dangerous materials like needles and electronics - they can cause injury to our workers.
	<i>Don't</i> toss in "tangles" like rubber hoses and wires - they can shut down an entire recycling center!
	<i>Don't</i> include bulky items like propane tanks or construction debris.

For additional tools on recycling right and the do's and don'ts of recycling, visit www.recycleoftenrecycleright.com.

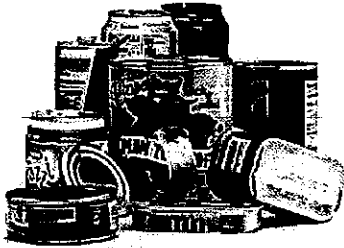
* Charges and fees will be assessed in accordance with contract terms and conditions where applicable.



**RECYCLE OFTEN.
RECYCLE RIGHT.SM**

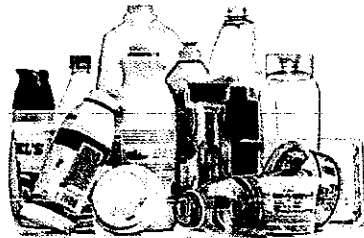


RECYCLE OFTEN:



Metal Cans

Steel, tin & aluminum soda, vegetable, fruit & tuna cans



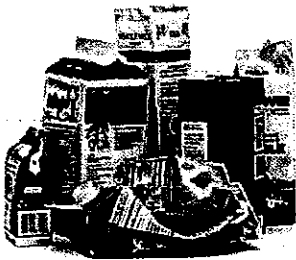
Plastic Bottles & Containers #1-5 & 7

Natural and pigmented plastic narrow-neck containers. Milk bottles, water bottles, detergent bottles, shampoo bottles, bleach bottles, etc.



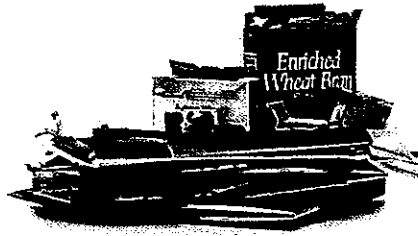
Paper

Brown paper bags, non-confidential, office paper, newspaper, magazines



Paper Cardboard, Dairy & Juice Containers

Food and beverage cartons such as milk, soup and broth. Lids must be removed



Flattened Cardboard & Paperboard

Corrugated cardboard, construction paper, Kraft paper, cereal boxes, shoeboxes or similar

RECYCLE RIGHT:

Things you can do to ensure quality material is recycled:



DO NOT INCLUDE: Food waste, plastic bags, or polystyrene foam cups & containers